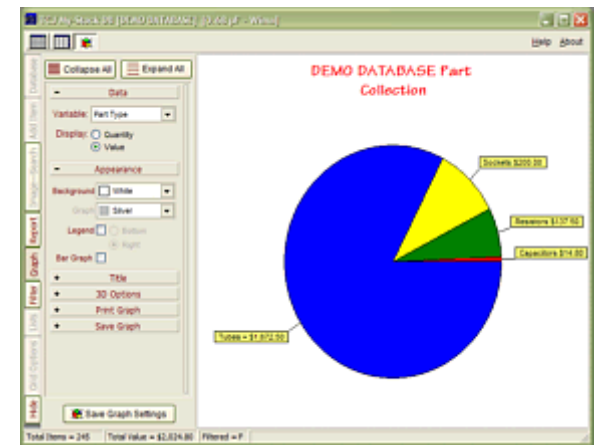


The graph above shows the tube's current conduction in hot pink, the grid bias voltage in blue, and the capacitor's voltage differential in green. The signal burst excessively charges the DC servo's capacitor and its output voltage is thrown off the mark by over half a volt (602mV).

The principle behind the clipping-style auto-bias circuits is also simple: monitor the tube's current conduction while it is operating in class-A; ignore its AC conduction beyond class-A, when the tube moves into class-B. The clipping diode shorts to ground error signals greater than its forward voltage. In other words, the clipping diode's forwards voltage creates a window that extends from 0V to the cathode-to-anode voltage required to turn the diode on (silicon diodes also have cathodes).

By setting the DC servo's reference voltage to half of the diode's forwards voltage, we ensure that the window of current encompasses the extent of class-A operation that the tube(s) can undergo, without one tube cutting off, while the other conducts beyond the window's top edge. This plan works perfectly with no input signal; well with large input signals that extend deep into class-B; not so well with input signal just beyond class-A operation of the output tubes.

## Broskie auto-bias circuit



Part Type	Name	Quantity	Brand	Vendor
Tube	2A3	3	RCA	Electronic First
Tube	6B5L7	4	Sylvania	Seward Mfg
Tube	6B5L7	4	Sylvania	John's TV Co
Tube	6B5L7	10	Tung-Sol	John's TV Co
Tube	6B5L7	3	Defender	Flex Start
Tube	6B5L7	10	Sylvania	Flex Start
Tube	12A7T	20	National	Seward Mfg
Tube	5887	5	Tung-Sol	Seward Mfg
Tube	5887PMA	4	GE	Antique Electron
Tube	5881	3	RCA	Seward Mfg
Tube	6L34	5	Mullard	Seward Mfg

Total Items = 70 Total Value = \$1,119.50 Filtered = F

TCJ My-Stock DB helps you know just what you have, what it looks like, where it is, what it will be used for, and what it's worth. TCJ My-Stock DB helps you to keep track of your heap of electronic parts. More details.

## Version 2 Improvements

- List all of your parts in one DB.
- Add part Images.
- One-click web searches for part information.
- Vertical and horizontal grids.\*
- Create reports as PDFs.\*
- Graphs added 2D/3D: pie & bar.\*
- More powerful DB search.
- Help system added.
- Editable drop-down lists for location, projects, brands, styles, vendors and more.

\*User definable

**Download or CD ROM  
Windows 95/98/Me/NT/2000/XP**

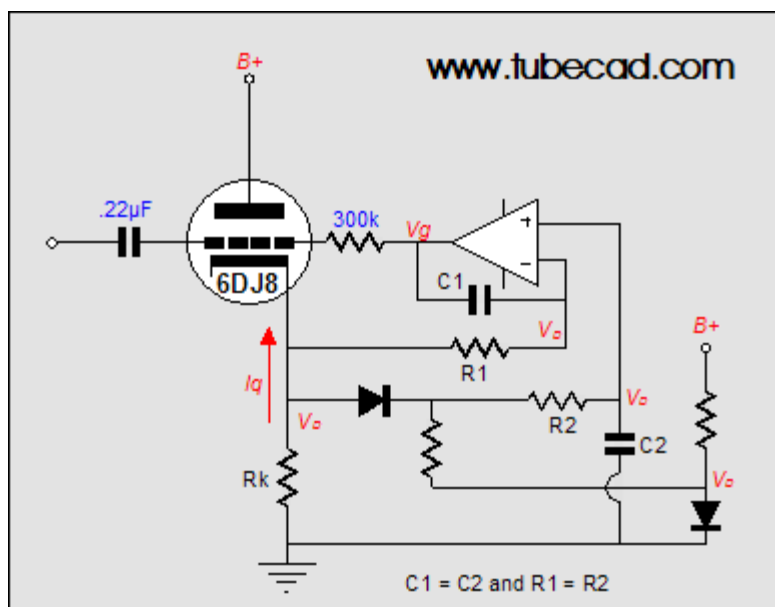
For more information, please visit:

[www.glass-ware.com](http://www.glass-ware.com)

To purchase , please visit our Yahoo Store:

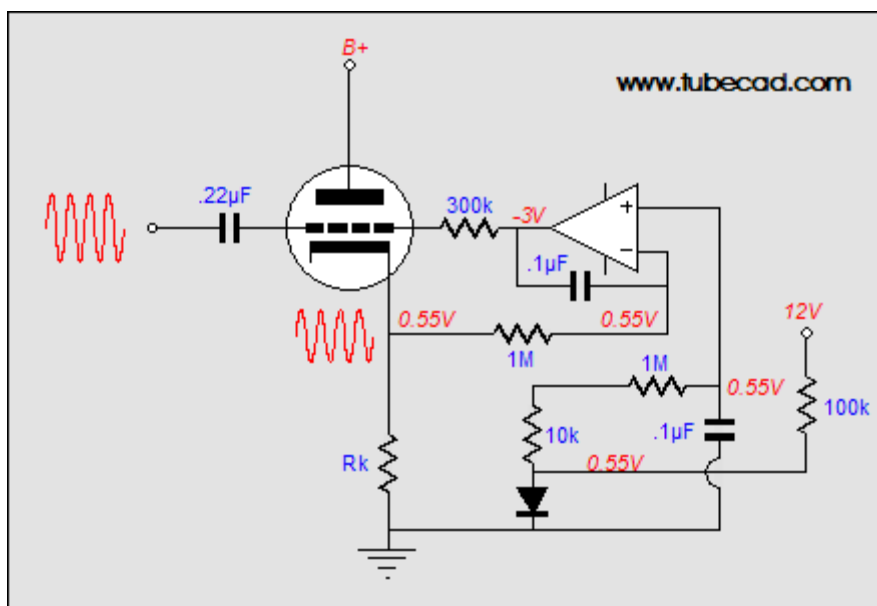
What if we don't clip the error signal? What if, instead, we use it to prevent the DC servo's capacitor's excessive charging from throwing the bias voltage off? Well, that's the idea behind the Broskie auto-bias circuit.

<http://store.yahoo.com/glass-ware>

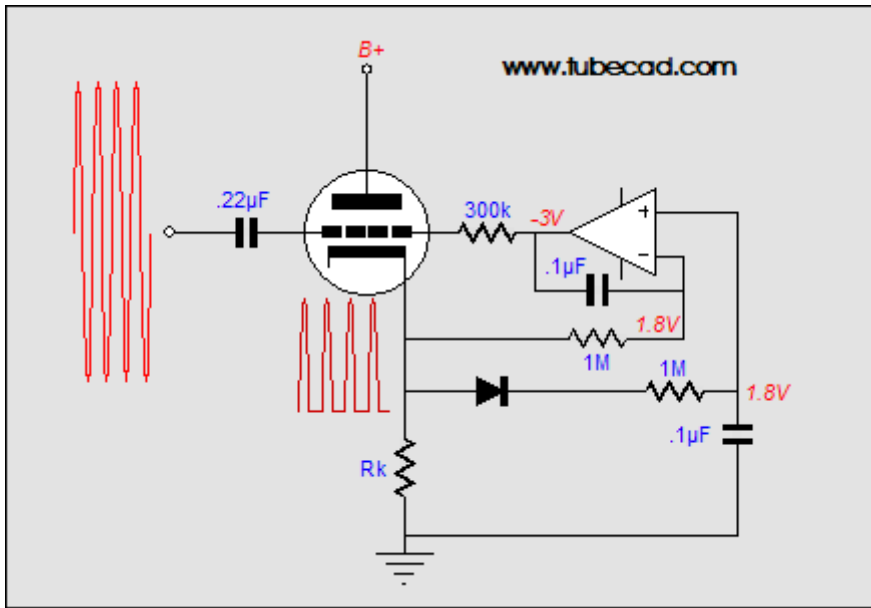


Broskie auto-bias circuit

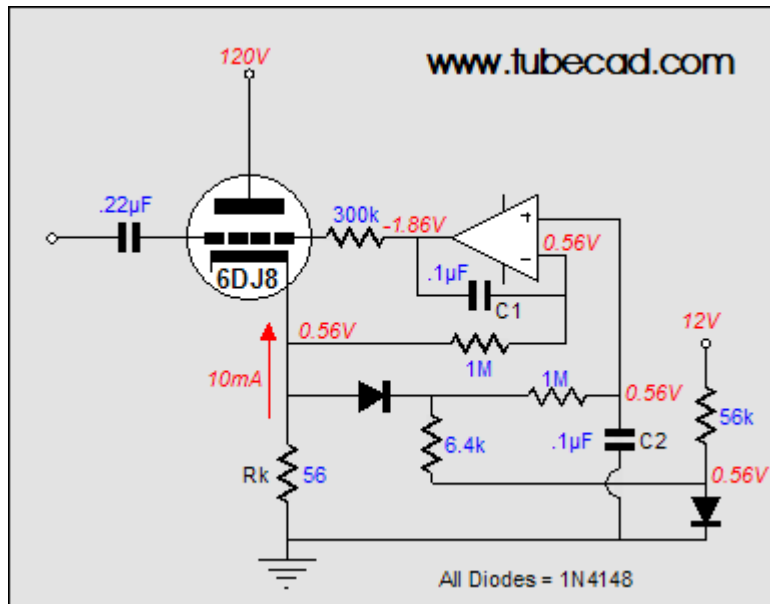
How does it work? The triode's idle current must be great enough to establish the same voltage across the cathode resistor as the diode's forward voltage, as this voltage is used as the servo's reference voltage. (Imagine that the diode that attaches to the tube's cathode has been removed from the circuit, which it effectively is at idle). The OpAmp compares the cathode voltage to its reference voltage and then establishes and maintains grid-bias voltage required to meet this compulsory idle current.



Now, as long as the tube runs within the boundary of twice the diode's forward voltage ( $V_d$ ) at its cathode, the triode will operate in pure class-A and the DC servo will handle setting the bias voltage quite nicely.



Once the tube leaves the confines of class-A, however, its cathode voltage will exceed twice  $V_d$  and the diode attached to the cathode will begin to conduct, charging  $C_2$  as a result. Since capacitors  $C_1$  and  $C_2$  are equal in value, as are resistors  $R_1$  and  $R_2$ , the rate of charging will be the same between both capacitors. In other words, the DC servo's reference voltage will be thrown off in a matching way as the servo's own capacitor is thrown off. It's much like docking a boat to a floating dock: no matter how much the tide rises or falls, the boat will remain in the same relation to the dock.

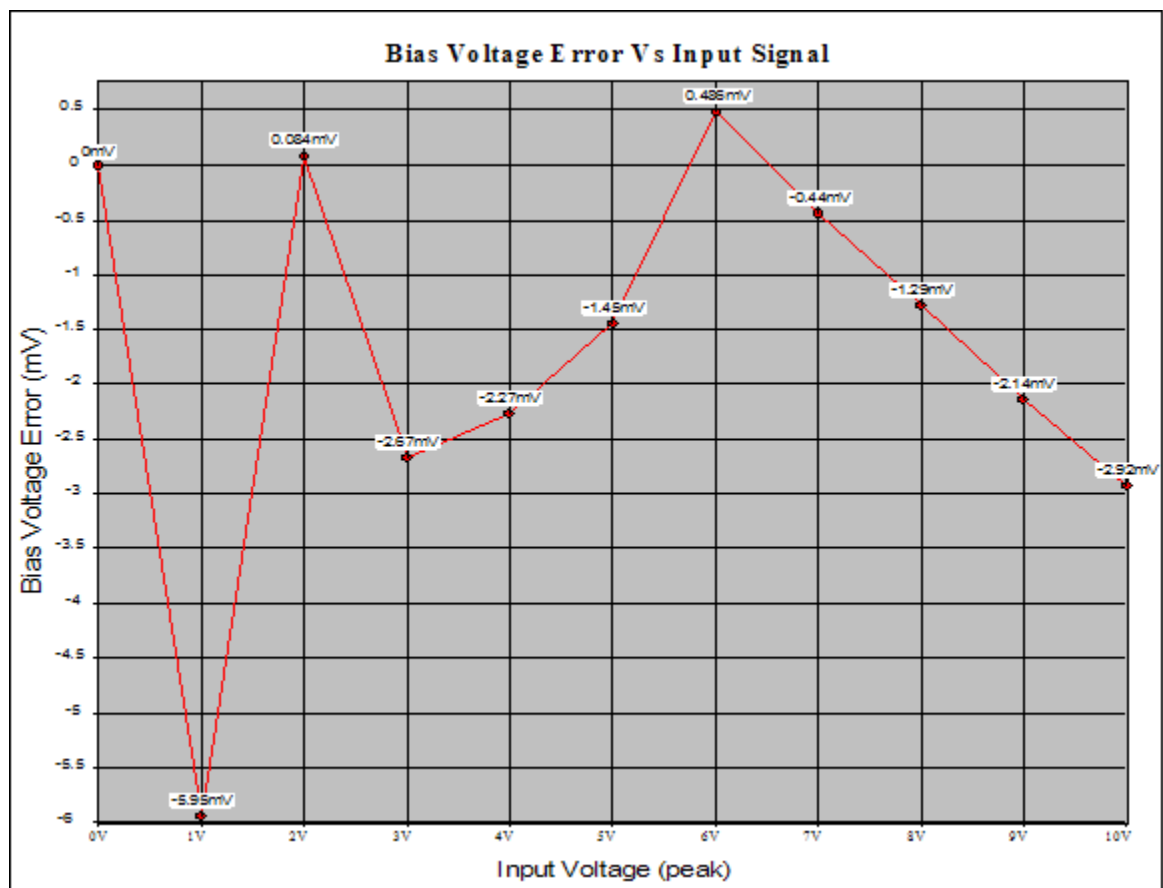


In the schematic above, we see all the part values and voltages labeled. In SPICE simulations, these values worked best (and of course, real values may differ).

### How well does it work?

Starting at a 1kHz input signal of 10 volts peak, the bias voltage is thrown off by about 3mV, the same amount of voltage that capacitors,  $C_1$  and  $C_2$ , differ in change of their charge after the tone burst. With a 2V input signal, the bias voltage is off by

only  $84\mu\text{V}$ . Ah, how easy it is to lie with data! Given just these two data points, we might reasonably conclude that the error grows with the magnitude of the input signal; it doesn't. With a 1V input signal, the bias voltage is off by only 5.95mV. (An analogous example of statistical lying by omission would be to only point out that those with PhDs make *less* money than those with only master degrees. Therefore, the more education, the less income. But if we point out that those with master degrees make more money than those with bachelor degrees, who in turn make more than those with two year college degrees, who also in turn make more than those with only a high school diplomas ..., an entirely different conclusion is reached. So, which is right? Careful: a trick question.)



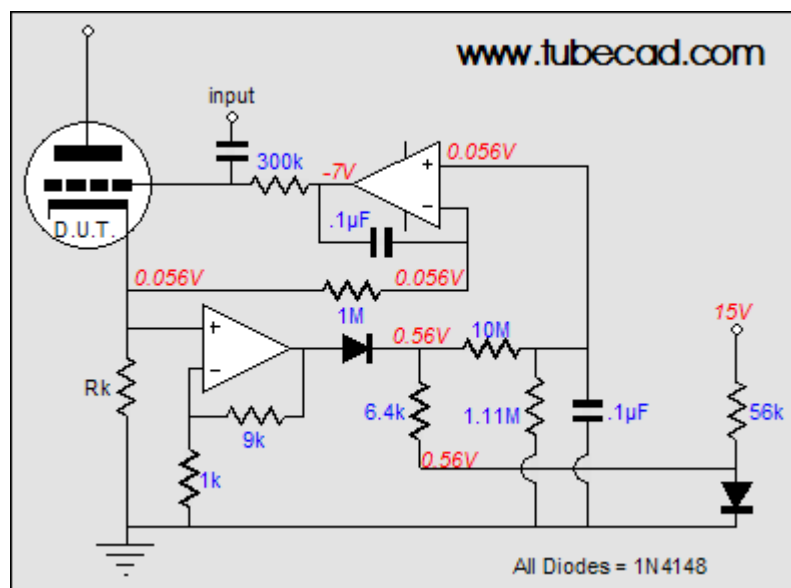
The above graph shows the circuit's bias voltage error in millivolts against input signal. Interestingly, the greatest departure from the desired bias voltage occurs at the 1-volt input signal. This makes sense, as the 6DJ8 is approaching the class-A boundary with this input signal and the tube undergoes a good bit of rectification; i.e. its linearity suffers because it is much easier to turn on a triode than to turn it off. This uneven handling of the sine wave ends up charging the servo's capacitor C1, but the voltage reference's capacitor doesn't see any of the rectification, so it isn't further charged.

### So, how good is the Broskie auto-bias circuit?

As it stands, not too bad. Having a small-signal triode's bias voltage thrown off by 6mV is not that bad. (Remember that the triode's grid actually sees a slightly different DC voltage, as the coupling capacitor is biased through a large-valued resistor.)

One problem this circuit faces is that the tube's cathode is burdened by the presence of the 1N4148 diode and the 6.4k resistor. In the act of sampling the cathode voltage, we end up influencing the tube by giving it a nonlinear cathode load. A second, and much more damning, problem is found in the relatively high-valued cathode resistor (56k-ohms in this example). Ideally, we should be able to choose whether or not the triode receives a little or a lot of cathode degeneration.

The workaround for the last problem is to amplify the cathode voltage before using the diode to set a voltage threshold. In the schematic below, we see an additional OpAmp that both buffers the cathode voltage from the diode and provides voltage gain, allowing us to use a much smaller-valued cathode resistor. (When the Broskie auto-bias circuit is used with MOSFETs or transistors, this feature will become much more important, because of the much lower power supply voltages used and much higher currents experienced through the output devices.)

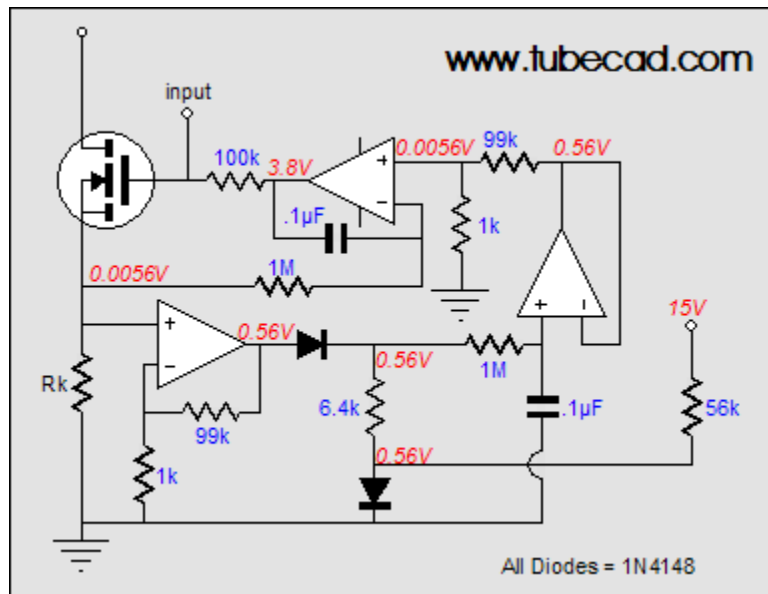


Two-OpAmp Broskie auto-bias circuit

Note that a single 1M resistor is missing from the voltage reference portion of the circuit; in its stead, a 10M and 1.11M resistor are used to create a 10% voltage divider whose output impedance equals 1M, the same resistor value that the servo uses. (10M in parallel with 1.11M equals 1M.)

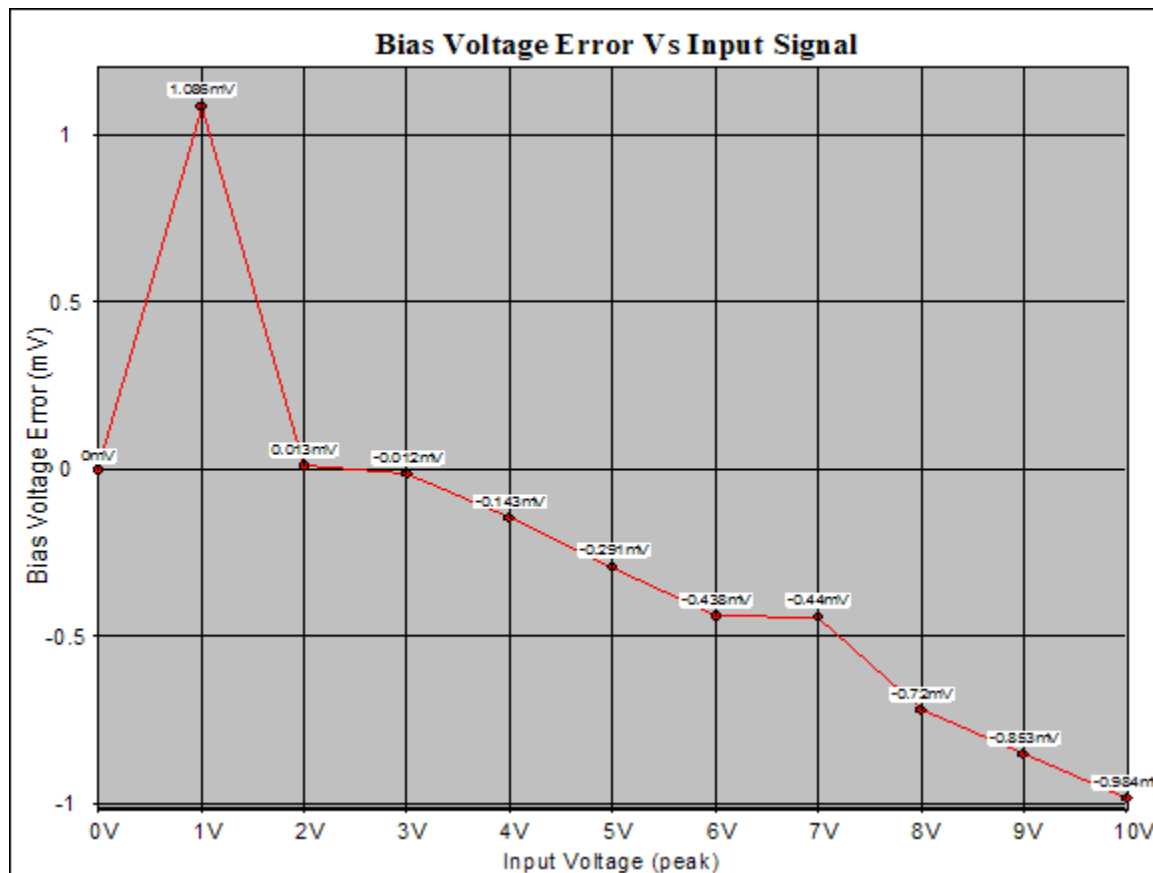
Unfortunately, 1% resistors above 2M are hard to find. OpAmps, on the other hand, are readily available and cheap. The circuit below uses an additional OpAmp to buffer the voltage reference's output before feeding a fairly low-impedance voltage divider. The source voltage is first amplified by 100 and the voltage-reference voltage is divided by 100.





Three-OpAmp Broskie auto-bias circuit

How well does the dual-OpAmp version of the Broskie auto-bias circuit work? Much better than the previous version, it turns out.



Not too bad. The bias voltage is only once thrown off by more than 1mV (1.084mV, to be exact). Once again the most egregious error occurs at an input signal of 1 volt, but beyond that input level, the auto-bias circuit works admirably. So much so, in fact, that some of my friends are wondering why I didn't apply for a patent on this circuit or sell it to some big-name audio-equipment company or, at the very least,



show them and no one else. Why did I choose none of the above? Not my style, is as good a answer as any.



I don't believe in patents for circuit topologies and I don't like the idea of only a few people benefiting from a good circuit. (I know a few of my friends are pulling their hair out as they read this: what's the point of being a magician if you keep revealing how your tricks are done, and if you aren't willing to make a bundle performing them?)

I do ask that if you use the circuit in a commercial product, give me credit for having come up with it.

### **Simplest clipping-auto-bias circuit**

Are we done? No, not even close, but my fingers are done for today. Next time we will look into a hybrid auto-bias circuit that uses both fixed bias (a potentiometer) and a DC servo.

//JRB

[< Back](#)

[www.tubecad.com](http://www.tubecad.com)

Copyright © 1999-2005 GlassWare

All Rights Reserved

[Next >](#)